



# CND PLEXIGEL™ Shaper-Natural Nail Overlay

A service option for natural nails requiring strength, protection and light shape enhancement.

## CND™ PRODUCTS REQUIRED

- COOLBLUE™ Hand Cleanser
- OFFLY FAST™ Moisturizing Remover
- SCRUBFRESH™ Nail Surface Cleanser
- CND™ Files and Buffers
- CND PLEXIGEL™ Bonder
- CND PLEXIGEL™ Shaper
- CND PLEXIGEL™ Protector Top Coat

## ACCESSORIES/EQUIPMENT REQUIRED

- CND™ LED Lamp
- Hand towels
- Hand soap
- Plastic-backed, lint-free pads
- 99% Isopropyl Alcohol
- Cuticle pusher
- Manicure nippers
- Nail clippers
- Curette
- E-File\*

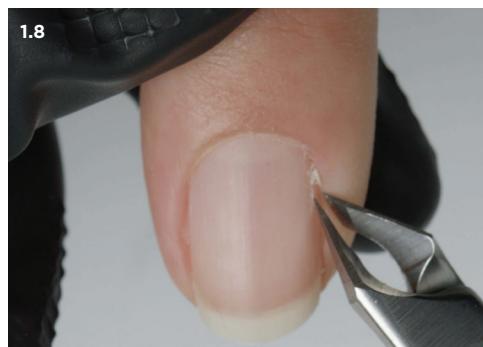
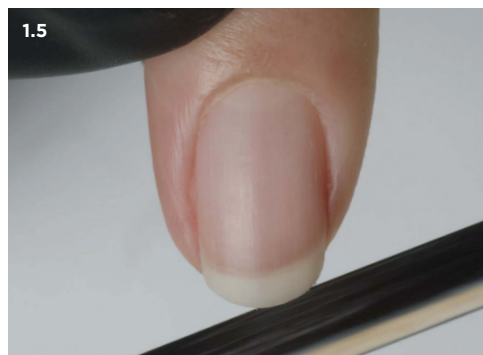
\*Optional



## Step 1 PERFORM A MANICURE.

P

1. Have the client wash their hands with soap and running water for 20-30 seconds and towel dry.
2. Massage COOLBLUE™ Hand Cleanser into the client's hands.
3. If necessary, remove any existing nail color from the natural nail using an acetone-based polish remover (OFFLY FAST™ Moisturizing Remover) and a plastic-backed lint-free pad.\*
4. If necessary, trim the length from each nail, using nail clippers.
5. Shape the free edge of each nail with a fine 240-grit file (Kanga™ File or Koala Buffer™).
6. Gently slide a **cuticle pusher** along the nail plate toward the proximal nail fold (cuticle area) and along each lateral fold (sides of nail) to lift and loosen any cuticle (non-living tissue) from the nail plate.\*\*
7. Gently guide a **curette** along the nail plate to remove non-living tissue on the nail.
8. If necessary, use a **manicure nipper** to carefully remove any loose pieces of skin or hangnails.



\* Acetone-based polish removers like CND™ OFFLY FAST™ is the quickest and safest way to remove nail color. Non-acetone-based polish removers will dissolve enamel more slowly and "smear" the color onto the cuticle area risking over-exposure.

\*\* For clients who build excessive cuticle between services, apply a small amount of CuticleAway™ Professional Cuticle Remover evenly around the cuticle of each nail and perform cuticle service. Be sure to scrub nails thoroughly with soap and running water for 20-30 seconds to thoroughly remove the cuticle remover and towel dry.

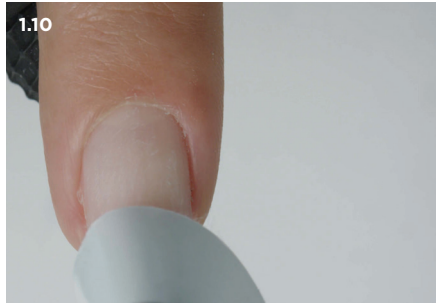
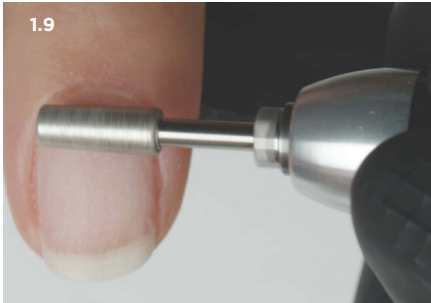
# RE E P

## REMOVE SHINE.

- Remove shine from the natural nail surface with a fine 240-grit buffer (**Koala Buffer™**) in the direction of the natural nail growth.  
**Optional:** Use an enhancement prep bit at low speed with very gentle pressure with E-File.

## ELIMINATE SURFACE CONTAMINANTS AND PURIFY NAIL PLATE LAYERS.

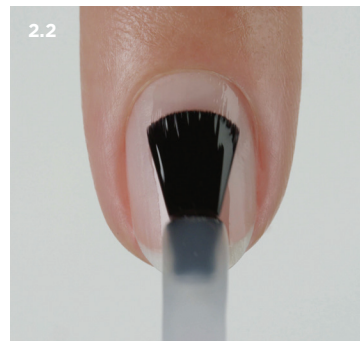
- Thoroughly cleanse and temporarily dehydrate the nail plate layers with **SCRUBFRESH™** using a lint-free, plastic-backed pad. Pull back the skin and scrub the nail as if removing red nail polish.



### Step 2

## APPLY CND PLEXIGEL™ BONDER

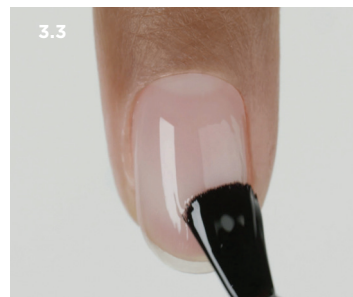
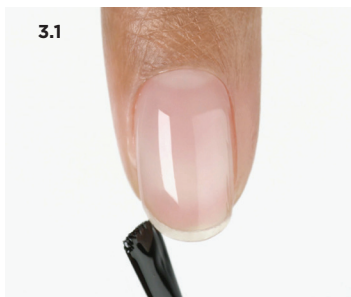
- Roll the bottle gently to blend.
- Apply a thin layer of **CND PLEXIGEL™** Bonder to all five nails, sealing the edge after each application. Always leave a tiny free margin around the perimeter of the nail to avoid the skin.
- Cure for 10 seconds in the **CND™** LED Lamp using preset button 1. Do not remove the top film after removing nails from the lamp.



### Step 3

## APPLY CND PLEXIGEL™ SHAPER

- Apply a thin, even layer of **CND PLEXIGEL™** Shaper to the natural nail, sealing the free edge after application. Always leave a tiny free margin around the perimeter of the nail to avoid the skin.
- Apply to all five nails and cure for one minute in the **CND™** LED Lamp using preset button 2B. Do not remove the top film after removing the nails from the lamp.
- Apply a second layer of shaper to perfect the shape, using a light touch to float the gel over the nail.
  - Flash cure two fingers at a time to prevent the gel from running, using preset button 1.
- Apply shaper to all five nails and cure for one minute using present button 2B.



## Step 4

### PERFECT THE SHAPE

(Optional)

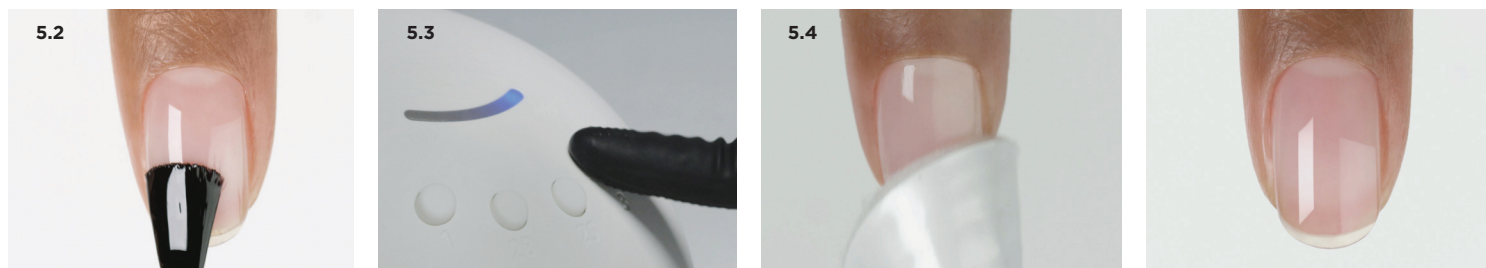
- 1 If shape refinement is needed, remove top film with cotton pad saturated with 99% Isopropyl Alcohol.
- 2 Buff the surface of the nail to smooth out any imperfections using a 180-grit file or buffer (Boomerang Padded File or **Bilzzard™ File**)  
**Optional:** Use a medium grit diamond bit at ½ speed with E-File
- 3 Remove dust and cleanse the nail with 99% Isopropyl Alcohol.

## Step 5

### APPLY CND PLEXIGEL™ PROTECTOR TOP COAT

Use to seal and protect clear enhancements or prior to applying CND™ VINYLUX™ Long Wear Polish.

1. Roll the bottle gently to blend.
2. Apply a layer of CND PLEXIGEL™ Protector Top Coat to all five nails sealing the free edge after application.
3. Cure for one minute in the CND™ LED Lamp using preset button 3.
4. Lightly wipe to remove top film with lint-free pad or cosmetic sponge saturated with 99% Isopropyl Alcohol.



## Step 6

### ADD COLOR

(Option for gel polish)

If using CND™ SHELLAC™ Gel Polish, skip Protector Top Coat and CND™ SHELLAC™ Base Coat.

1. Shake CND™ SHELLAC™ Color vigorously to blend.
2. Apply two thin layers of color coat to all five nails using the 5-point polish method.
3. Cure each layer for one minute in the CND™ LED Lamp using preset button 2S.
4. Apply a layer of CND™ SHELLAC™ Top Coat to all five nails.
5. Cure for one minute in the CND™ LED Lamp using preset button 3.
6. Lightly wipe to remove top film with cotton pad or cosmetic sponge saturated with 99% Isopropyl Alcohol.
7. Apply a drop of SOLAROIL™ to condition the nail.

